

LevelL controller SECURICUVE



- Lack of liquid detection (drop of level)
- Positive active detection
- Compact
- Easy to test its integrity on site
- Material: Or PPH or PVDF

APPLICATION

- Level drop detection in tanks of surface-treating process
- Protection against overheating following evaporation or tank leaking, or default on chemical refilling

DESCRIPTION

A float (1) at the bottom of a stem (2) moves a magnet (3) inside the head housing (4).

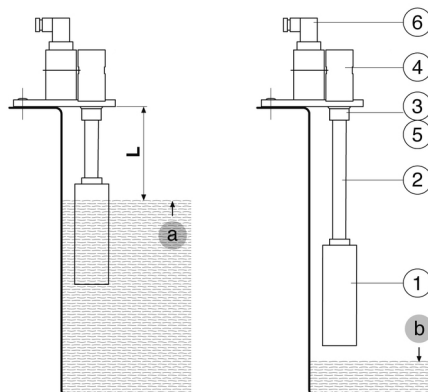
The fluid maintains the equipment (float, stem and magnet) in highest position "a" (normal status).

When the fluid level is going down, the equipment comes in lowest position, down to block on stopper (5), position "b".

The switch BSM (6) changes from normal status to alarm status (BSM: data-sheet 585-01).

To test the complete system, it is sufficient to push down the float to the lowest position or by draining part of the container.

For a safe operating condition it would be better to test regularly the complete system.



TECHNICAL FEATURES

Float, stem, bracket, head	Or PPH, or PVDF
Temperature max.	PPH = 105 °C / PVDF = 140 °C
Pressure	Atmospheric
Fitting	Bracket in PPH or PVDF, 60x150 mm, 10 mm thick

CONTACT BSM 501 (not included)

Rated voltage	4 ... 250 V AC; 4 V ... 30 V DC
Rated current	1 mA ... 3 A (AC or DC)
Switch	Microswitch bi-stable, change-over
Connector	Plug according DIN 43650
Cable	Cross section 1,5 mm ² max.
Cable gland	PG 13.5
Ambient temperature	-20 ... +90 °C
Housing	Translucent polycarbonate, IP 65

BAMO INTERNATIONAL

22, Rue de la Voie des Bans · Z.I. de la gare · 95100 ARGENTEUIL

Tel +33 (0)1 30 25 83 20 Web www.bamo.eu

Fax +33 (0)1 34 10 16 05 E-mail export@bamo.fr

LevelL controller
SECURICUVE

02-04-2019

D-584.02-EN-AA

NIV

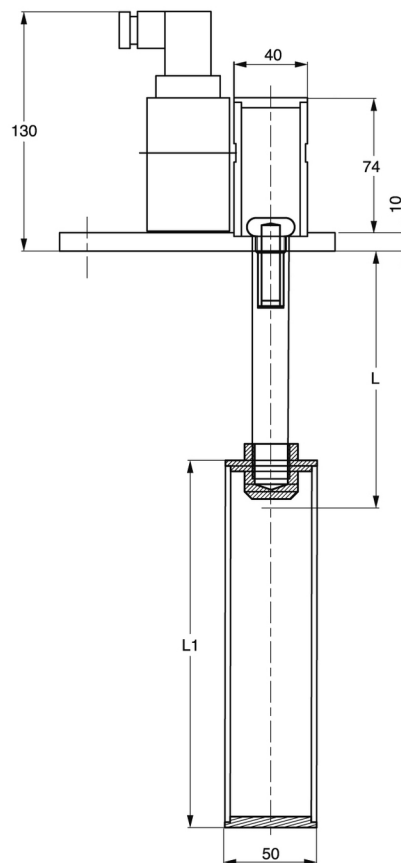
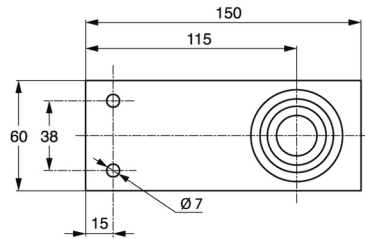
584-02/1

CODE NUMBERS AND REFERENCES

Code	Reference	Description
584 500	SECURICUVE-PPH	SECURICUVE, PPH Controller
584 550	SECURICUVE-PVDF	SECURICUVE, PVDF Controller
585 100	BSM 501	Level switch with collar

Mandatory: Ordering information must precisely fix the trigger point distance L (L = . . . mm)
(L max. = 500 mm)

DIMENSIONS



BAMO INTERNATIONAL

22, Rue de la Voie des Bans · Z.I. de la gare · 95100 ARGENTEUIL

Tel +33 (0)1 30 25 83 20 Web www.bamo.eu

Fax +33 (0)1 34 10 16 05 E-mail export@bamo.fr

Level controller
SECURICUVE

02-04-2019

D-584.02-EN-AA

NIV

584-02/2