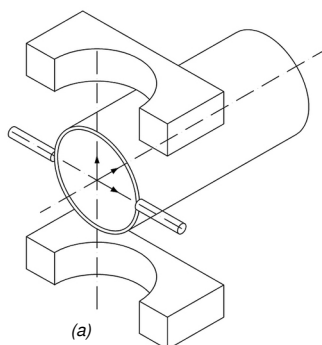


Electromagnetic flow-meter BAMOMATIC



- The most competitive on the market
- Ranges from 0.25 l/min up to 150 l/min
- Pulse output
- Small dimensions

APPLICATIONS

- Mechanical and industrial engineering fields
- Cleaning process
- Liquid dosage
- On board skids, etc.

DESCRIPTION

BAMOMATIC is a flowmeter based on the principle of electromagnetic induction to measure flow-rate on electrically conductive liquids ($> 20 \mu\text{S/cm}$). They are perfectly suited for dosing or totalizing liquids.

Each instrument is calibrated on a bench test at ± 5 pulses for 1000 pulses (Water at 20°C). Density of the liquid, its temperature or its pressure have no influence on the measurement; No moving parts in this flow-meter: it ensures operations without mechanical wear.

The measuring principle is based on Faraday's law (a):
In an electromagnetic flow-meter, the liquid section is in a magnetic field created by solenoid coils. Electrode sensors are on plane perpendicular to this field, in contact with the (conductive) liquid and allow measurement of the generated voltage. This voltage is directly proportional to the fluid velocity and therefore to the flow rate (for a constant flow section).

(a): According to Faraday's law, electromagnetism principle, the voltage induced in a moving conductor through a magnetic field, is directly proportional to the conductor speed.

TECHNICAL FEATURES

| | |
|--------------------------|--|
| Power supply | 24 V DC / ± 3 V DC |
| Consumption | 20 mA / 0.65 W |
| Protection | Against reverse polarity (diode) |
| Output signal | NPN Type |
| Status indicators | Red LED = power Green LED = output pulses |
| Electrical connection | DIN 43650-A plug |
| Fittings | $\frac{1}{2}$ " ; $\frac{3}{4}$ " ; 1" (according the model) |
| Nominal diameter | 8, 14 or 18 mm (according the model) |
| Measuring tube material | PVDF (Red housing) Option: Delrin (Blue housing) |
| Electrodes | AISI 316 L |
| Conductivity lower limit | $20 \mu\text{S/cm}$ |
| Pressure limits | 10 bar at 20°C ; 8 bar at 40°C ; 6 bar at 60°C |
| Operating temperature | $-10 \dots +60^\circ\text{C}$ |

EC Conformity: The instrument meets the legal requirements of the current European Directives

BAMO INTERNATIONAL

22, Rue de la Voie des Bans · Z.I. de la gare · 95100 ARGENTEUIL

Tel +33 (0)1 30 25 83 20 Web www.bamo.eu

Fax +33 (0)1 34 10 16 05 E-mail export@bamo.fr

Electromagnetic flow-meter
BAMOMATIC

02-05-2019

D-775.01-EN-AC

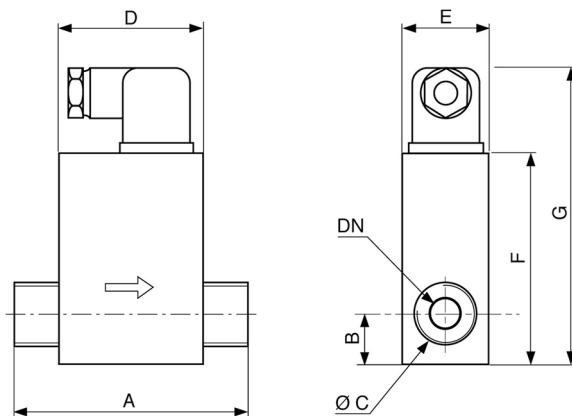
DEB

775-01 /1

CODE NUMBERS AND REFERENCES

| Code | Range (l/min) | Fittings - BSP | Output Hz/l/min | Range (Hz) | Pulse/l | Mass (g) |
|---------|-----------------|----------------|-----------------|--------------|---------|------------|
| 775 301 | 0.25 ... 5 | 1/2" | 16.6667 | 1.6 ... 83 | 1000 | 290 |
| 775 302 | 1...20 | 1/2" | 13.3333 | 13...267 | 800 | 290 |
| 775 303 | 2.5 ... 50 | 3/4" | 2.6666 | 5...134 | 160 | 300 |
| 775 304 | 5...100 | 1" | 2.6666 | 13...267 | 160 | 312 |
| 775 305 | 10...150 | 1" | 1.3333 | 13...200 | 80 | 312 |

DIMENSIONS



| Model | A [mm] | B [mm] | Ø C | D [mm] | E [mm] | F [mm] | G [mm] | ND |
|-------|--------|--------|------|--------|--------|--------|--------|----|
| 1/2" | 84.5 | 18.5 | 1/2" | 60 | 36 | 88 | 120 | 8 |
| 3/4" | 90 | 20 | 3/4" | 60 | 36 | 88 | 120 | 14 |
| 1" | 90 | 22 | 1" | 60 | 36 | 88 | 120 | 18 |

BAMO INTERNATIONAL

22, Rue de la Voie des Bans · Z.I. de la gare · 95100 ARGENTEUIL

Tel +33 (0)1 30 25 83 20 Web www.bamo.eu

Fax +33 (0)1 34 10 16 05 E-mail export@bamo.fr

Electromagnetic flow-meter
BAMOMATIC

02-05-2019

D-775.01-EN-AC

DEB

775-01 /2