

Bourdon tube pressure gauge "all stainless steel" acc. EN 837.1

100/150-P 600



CASE DIAMETER

100 or 150 mm

ACCURACY

Class 1

SCALE RANGES

From 0...0.6 bar to 0...1600 bar (or similar in other pressure units)

PRESSURE LIMITS DURING OPERATION

Continuously: steady pressure up to F.S. value, fluctuating pressure 90% of F.S. value

Temporarily: 1.3 x F.S. value for ranges up to 60 bar or 1.15 x F.S. for ranges from 100 bar to 1600 bar

TEMPERATURE LIMITS

Ambient: -40 to +60 °C (without liquid filling) and -20 to +60 °C (with liquid filling)

Process: maximal fluid T° is 200 °C (without liquid filling) and 100 °C (with liquid filling)

DRAFT DUE TO THE TEMPERATURE

When the measuring system T° is different from the reference T° (+20 °C) the draft is 0.4% / 10 K of true scale value, as a maximum.

TECHNICAL FEATURES

PROCESS CONNECTION

Stainless steel: AISI 316 L – Thread 1/2" BSP or NPT – M20 x 1.5

Lower or back mounting

PRESSURE ELEMENT

Stainless steel: AISI 316 L

< 100 bar : C - type

> 100 bar : Helicoidal type

MOVEMENT

Stainless steel: AISI 316 L

DIAL

White, black marks

Graduated scale length 270° angle

POINTER

Black aluminium pointer, adjustable

CASE AND RING

Stainless steel: AISI 304

Pressure relief disc (25 mm Ø) on the back

Filling plug on the top (used as a vent hole for ranged instruments up to 16 bar)

Bayonet type ring

WINDOW

Safety glass 4 mm thick

SEALING

Neoprene gasket

INGRESS PROTECTION

IP 65 acc. EN 60529 / IEC 529

OPTIONAL EXTRAS

Other connection types – Case and ring AISI 316 L – Front or rear flange
Silicone oil case filled (ambient temperature from -40 to +60 °C); other filling liquids on request – Electric contacts – Diaphragm seals – Oxygen application: grease free measuring system – Scale in °C for cooling fluids
Accuracy class 0.6 – ATEX certification Ex II 2 GD c – Accessories.

BAMO MESURES

22, Rue de la Voie des Bans - Z.I. de la Gare - 95100 ARGENTEUIL

Tél : (+33) 01 30 25 83 20 - Web : www.bamo.fr

Fax : (+33) 01 34 10 16 05 - E-mail : info@bamo.fr

Bourdon tube pressure gauge
"all stainless steel" acc. EN 837.1

100/150-P 600

12-06-2009

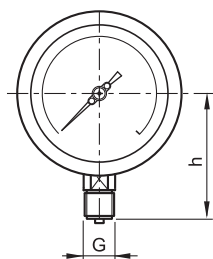
812 11 05 A

PR

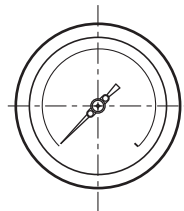
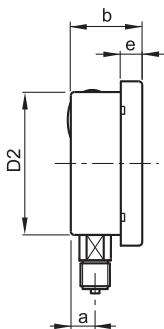
812-05/1

812

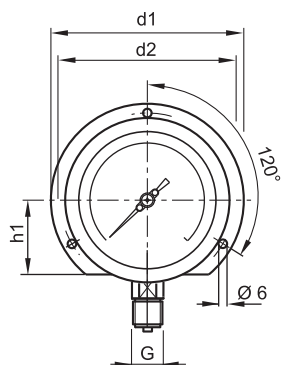
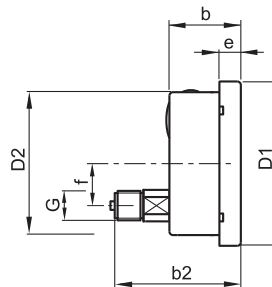
DIMENSIONS



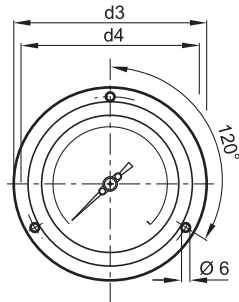
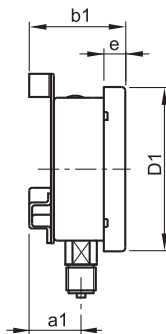
Lower vertical connection, direct mounting



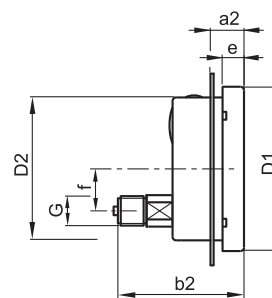
Rear back connection, direct mounting



Vertical connection, panel mounting, rear flange



Rear back connection, panel mounting, front flange



Ø	a	a1	a2	b	b1	b2	D1	D2	d1	d2	d3	d4	e	f	G*	h	h1
100	16	20	21,5	48	61	92	110.5	100	134	116	135	116	12.5	30	—	88	52
150	16	20	23	48	62	92	162	148.5	190	175	186	175	15.5	48	—	111	85

* G or NPT

REFERENCE DESCRIPTION

- (1) Case diameter **100 or 150 /mm**
- (2) Model **P600**
- (3) Process connection **8** 1/2" BSP-M
7 1/2" NPT-M
11 M20 x 1.5
- (4) Mounting **L** Direct mounting - Lower vertical connection
R Direct mounting - Rear back connection
LF Panel mounting - Rear flange - Vertical connection
RF Panel mounting - Front flange - Rear back connection
- (5) Measuring scales **0...0,6 to 0...1600 bar**
- (6) **OPTIONS**
- | | |
|------------------------------------|--|
| OA Class 0.6 | SX Stainless steel TAG plate |
| P PMMA window | OS Grease free for oxygen application |
| CS Case and ring AISI 316 | SW Dial tag marking |
| PG Glycerine case filling | RH OEM dial design |
| PZ Silicon oil case filling | AT ATEX certified version |
| SJ Maximum reading pointer | |
| MI Bourdon tube in MONEL | |

Example:

(1) **100** (2) **P600** (3) **8** (4) **R** (5) **6 bar** (6) **OA - AT**

BAMO MESURES

22, Rue de la Voie des Bans - Z.I. de la Gare - 95100 ARGENTEUIL
Tél : (+33) 01 30 25 83 20 - Web : www.bamo.fr
Fax : (+33) 01 34 10 16 05 - E-mail : info@bamo.fr

Bourdon tube pressure gauge
"all stainless steel" acc. EN 837.1

100/150-P 600

12-06-2009

812 I1 05 A

PR

812-05/2